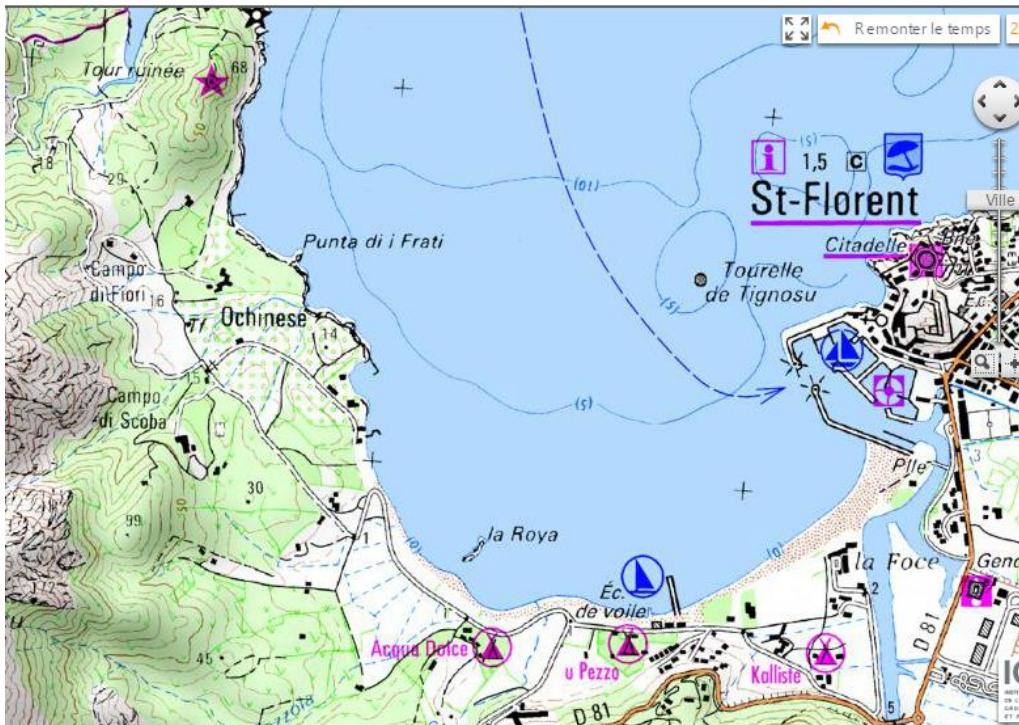
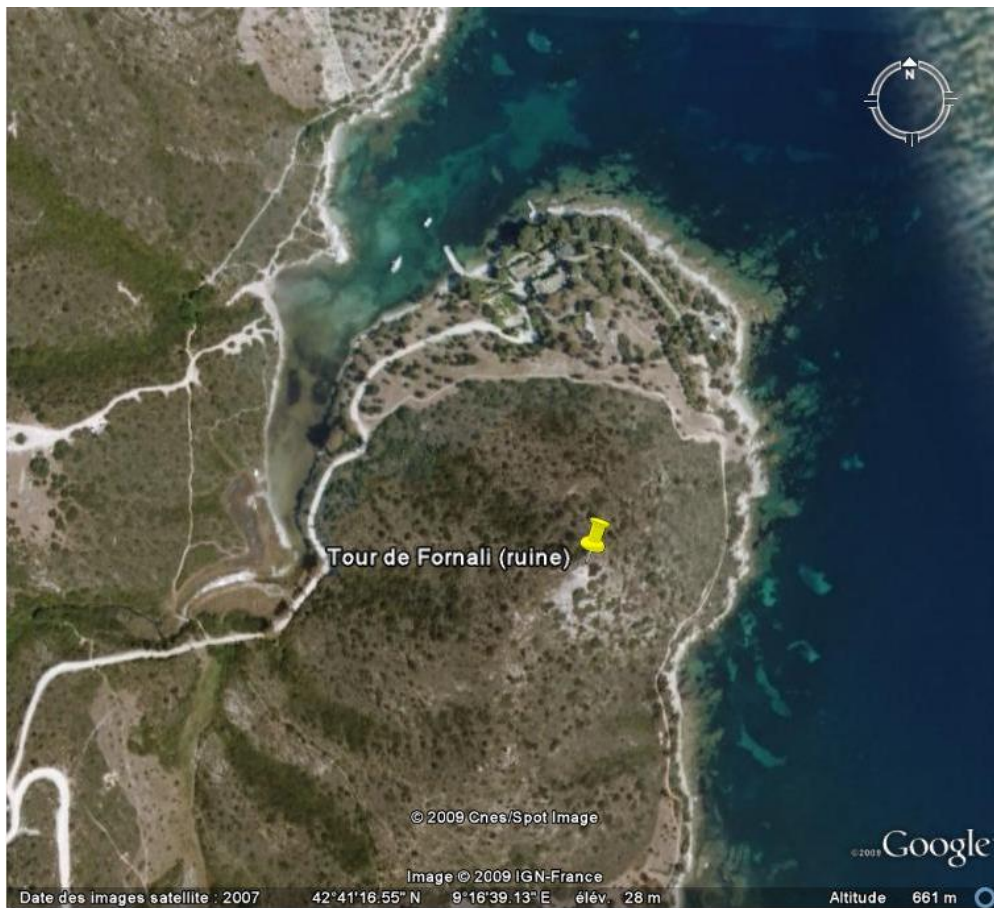


31 - Tour de Fornali – 42°41'14"N 9°16'42"E (Le 18/10 à partir de St Florent)



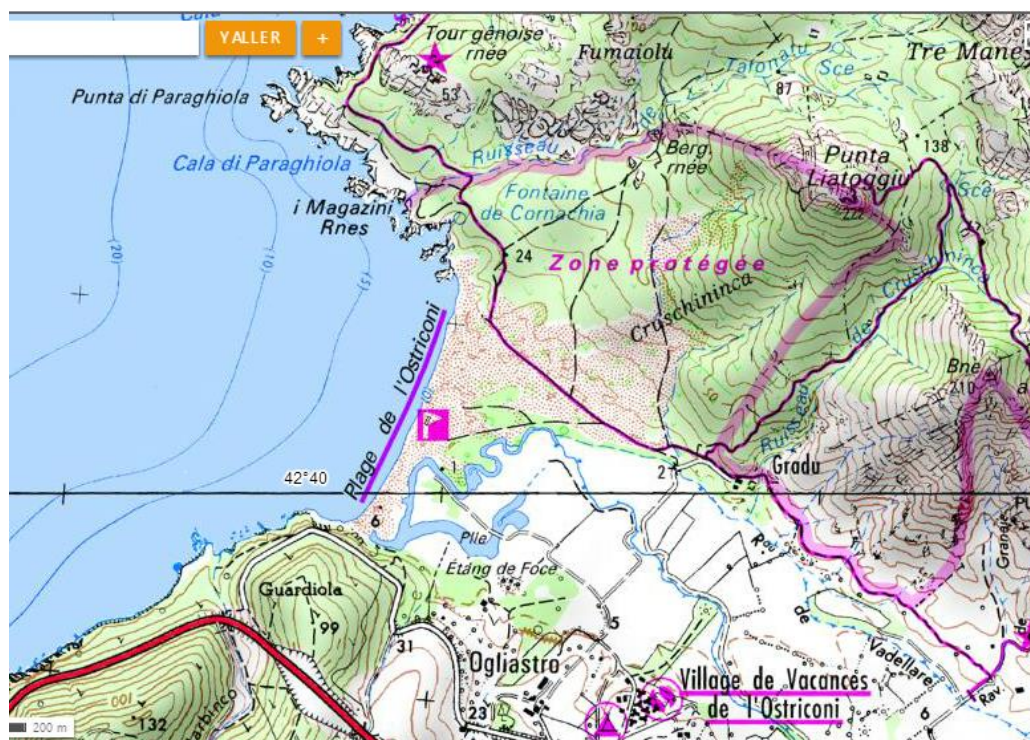
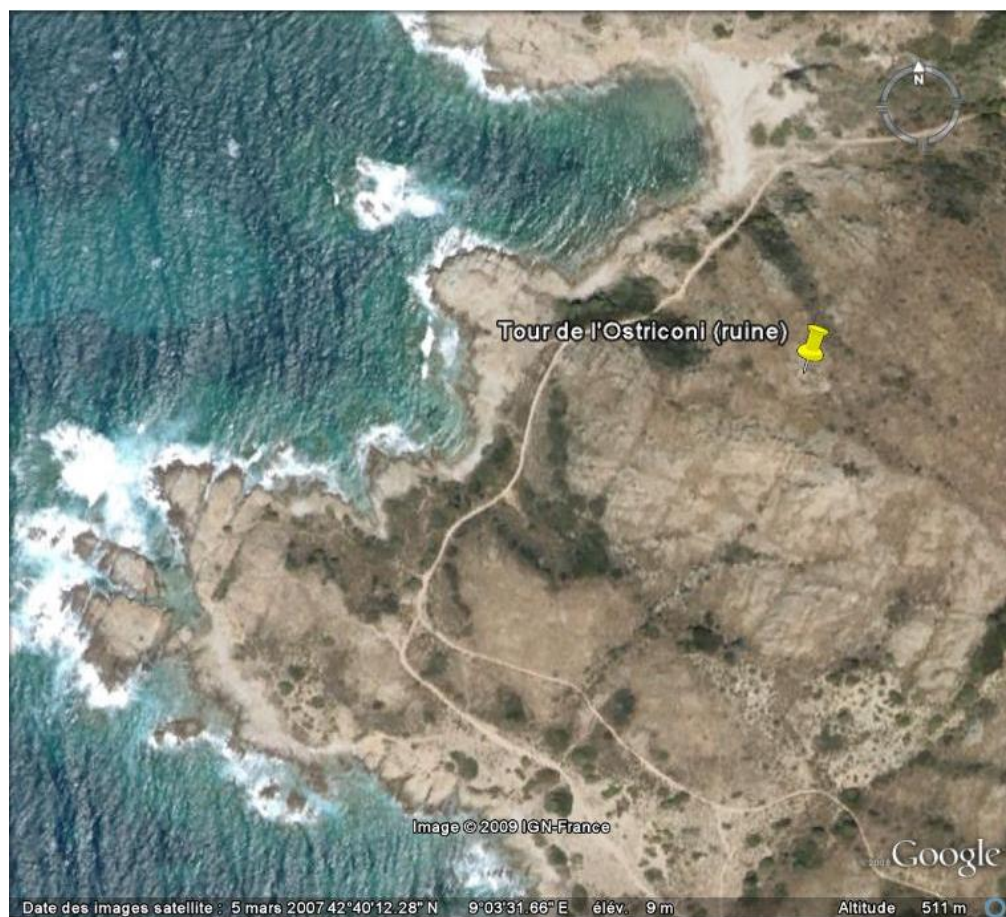
32 - Tour de Mortella – 42°42'54"N 9°15'25"E (Inaccessible, 10h de marche)

33 - Tour d'Ortella – Disparue

34 - Tour de Malfalcu – 42°43'34"N 9°06'47"E (Inaccessible, 10h de marche)

35 - Tour de l'Acciolu – Disparue

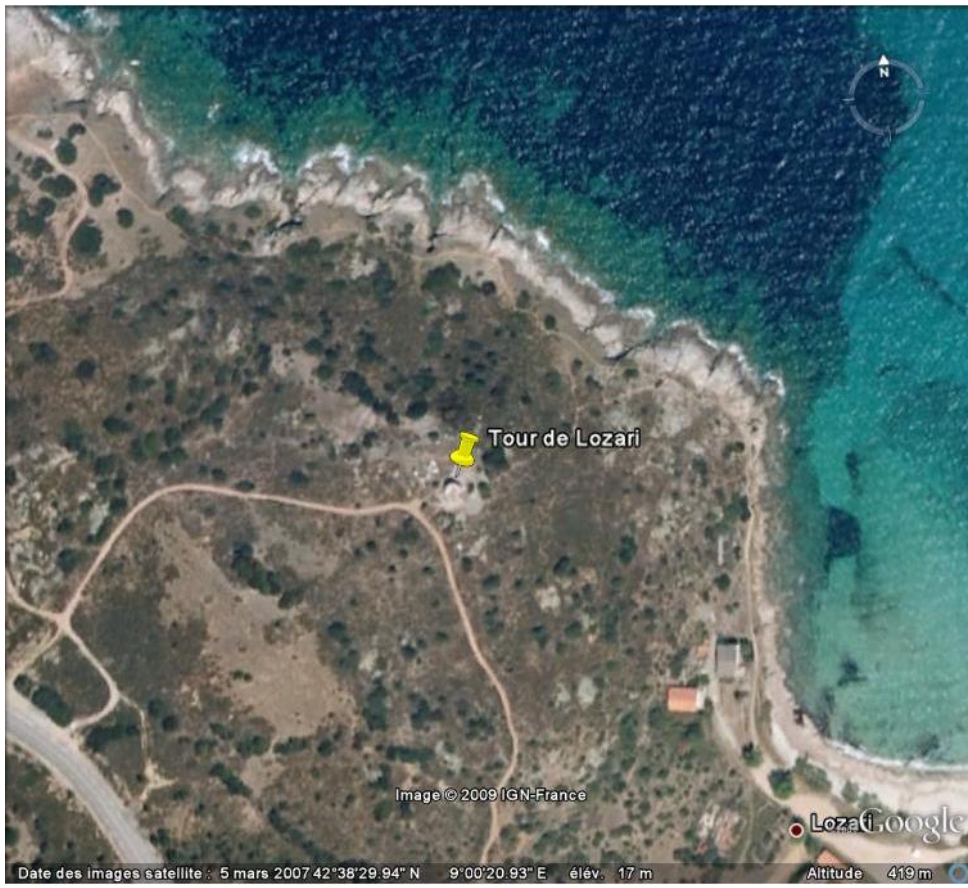
36 - Tour de l'Ostriconi – 42°40'13.50"N 09°03'39"E (le 19/10)



42°40o (Le 19/10)

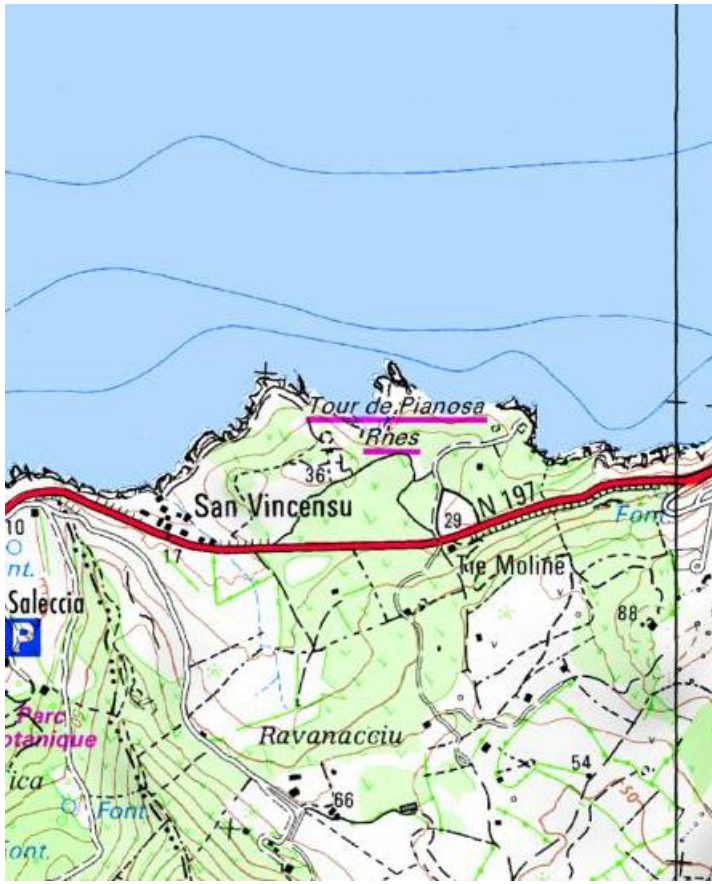
Voir plan d'accès ci-dessus

37 - Tour de Lozari – 42°38'29"N 9°00'20"E (Le 19/10)



38 - Tour de Pianosa – 42°38'24.50"N 8°59'15"E





39 - Tour de Saleccia – 42°38'24"N 8058'31.50"E



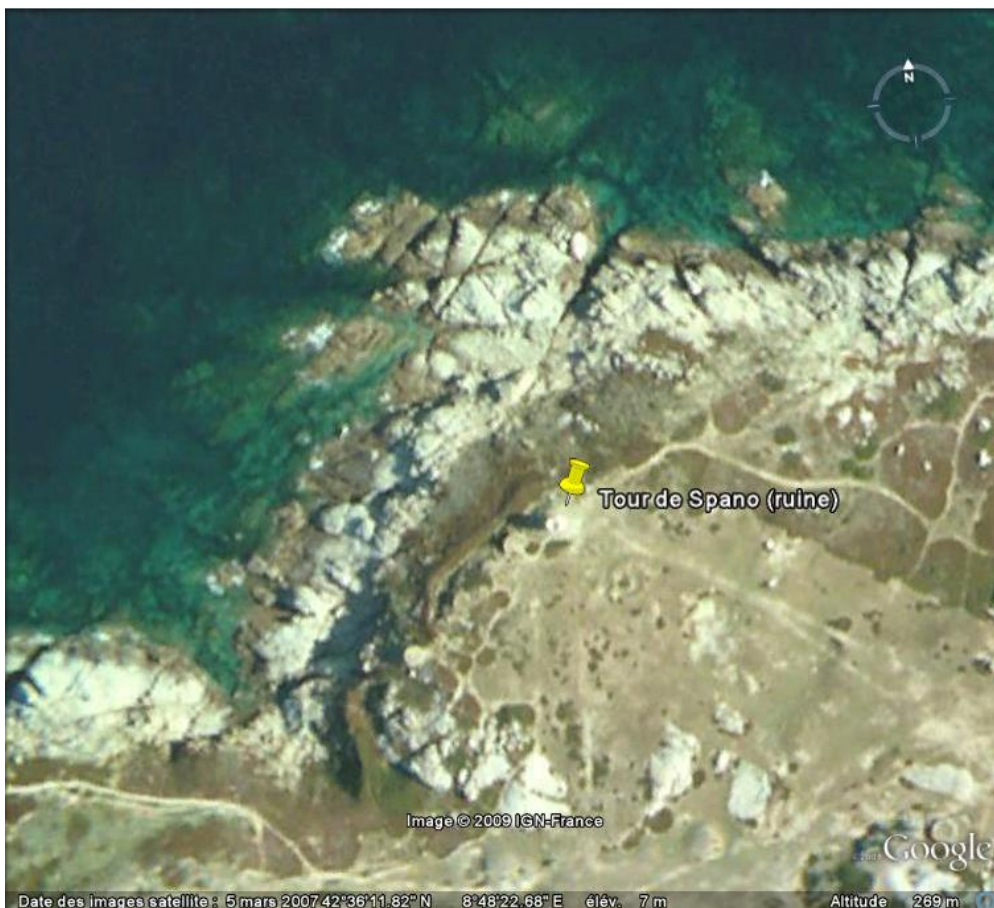
40 - Tour de L'Île Rousse – 42°38'36.50"N 8°56'06.50"E

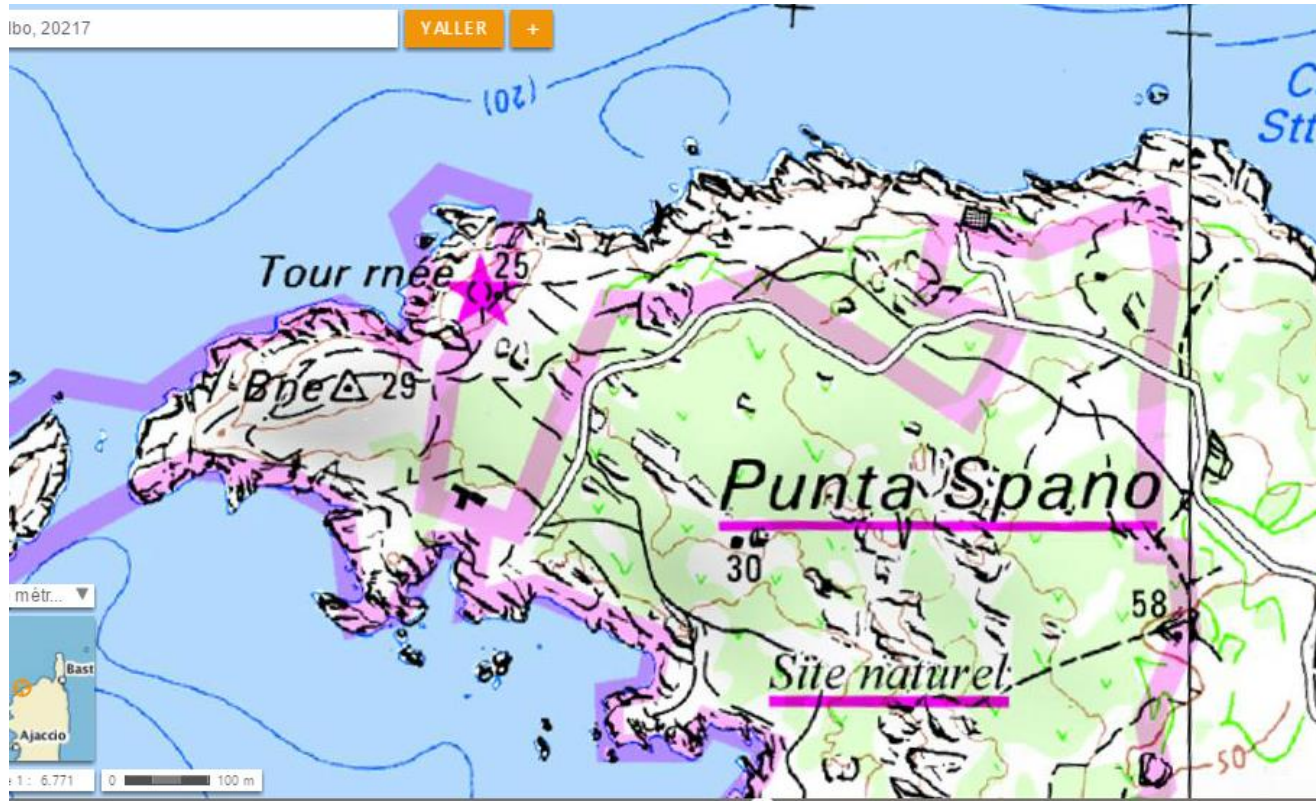


D 19 - L'Île-Rousse - Le Grillon

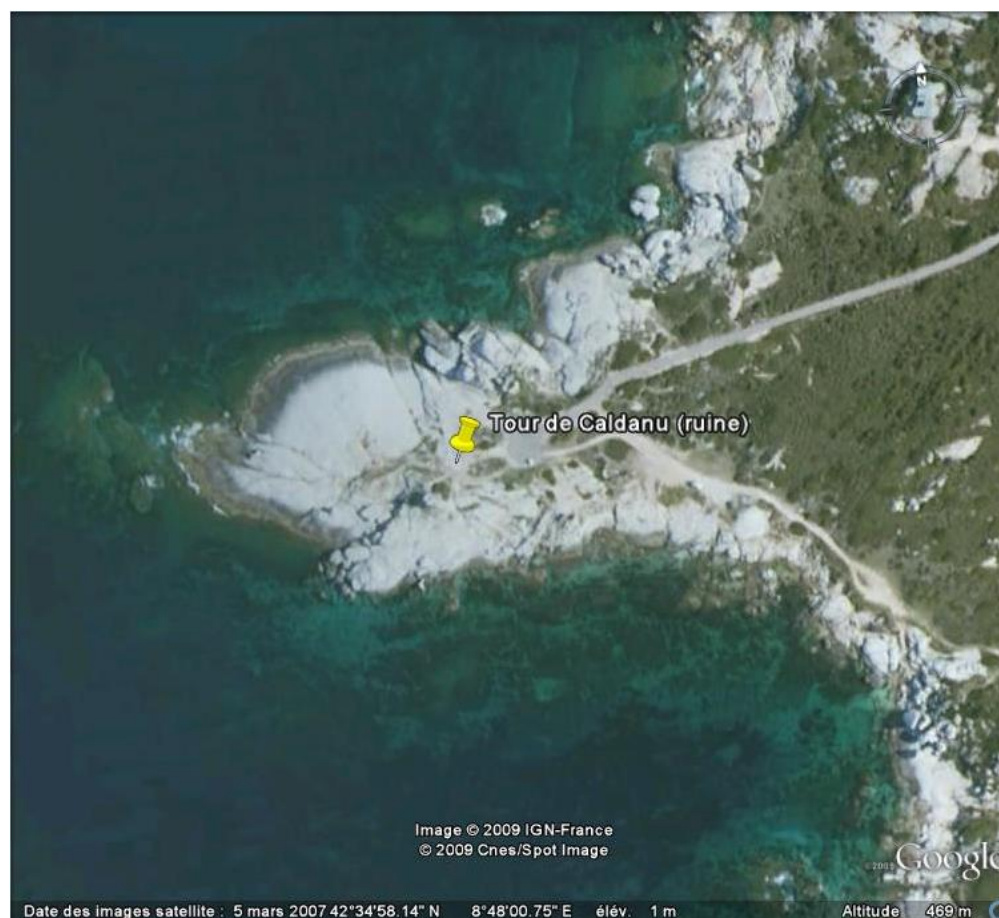
41 - Tour de Vallitone – Disparue

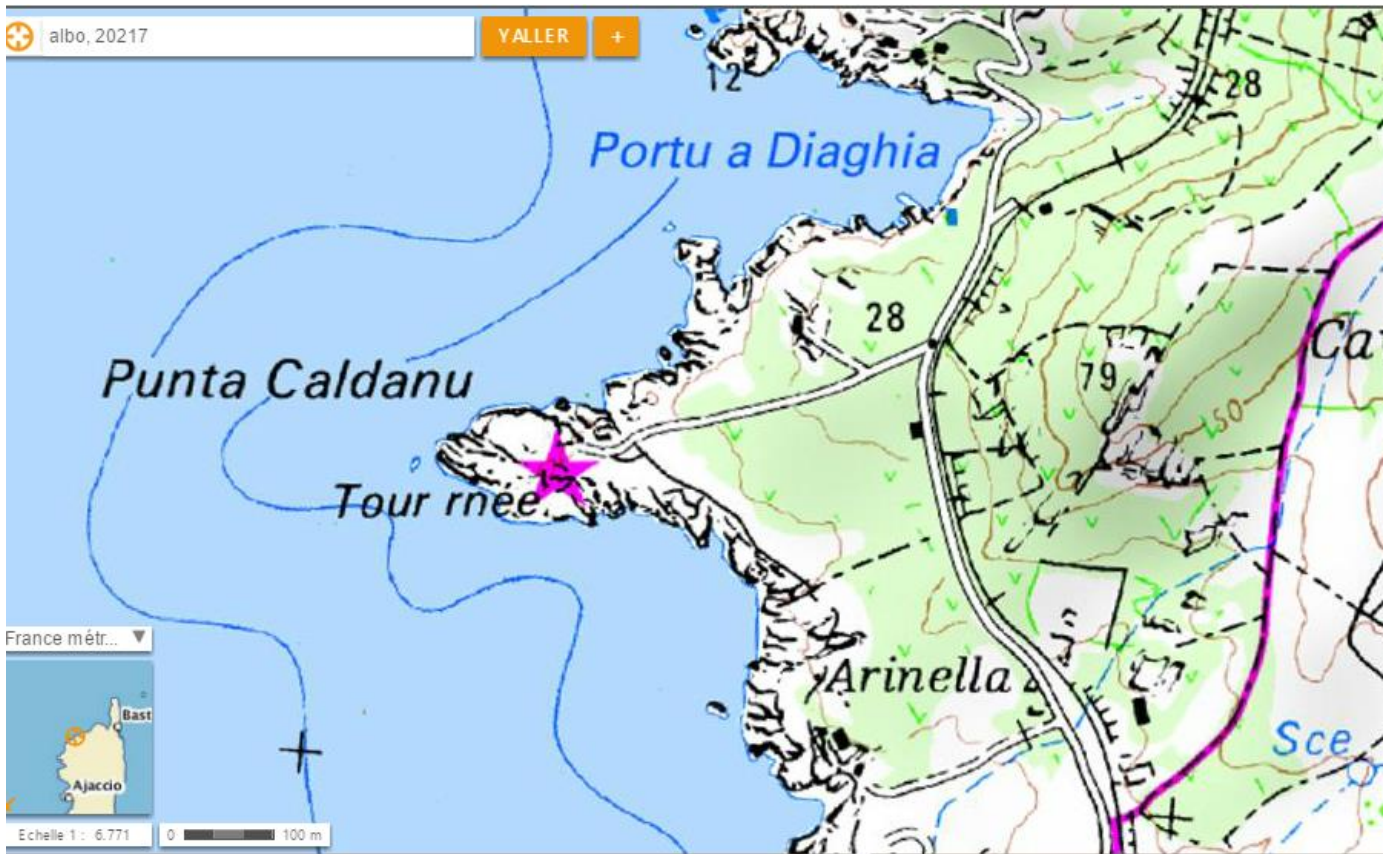
42 - Tour de Spano – 42°36'11"N 8°48'23"E (le 20/10)



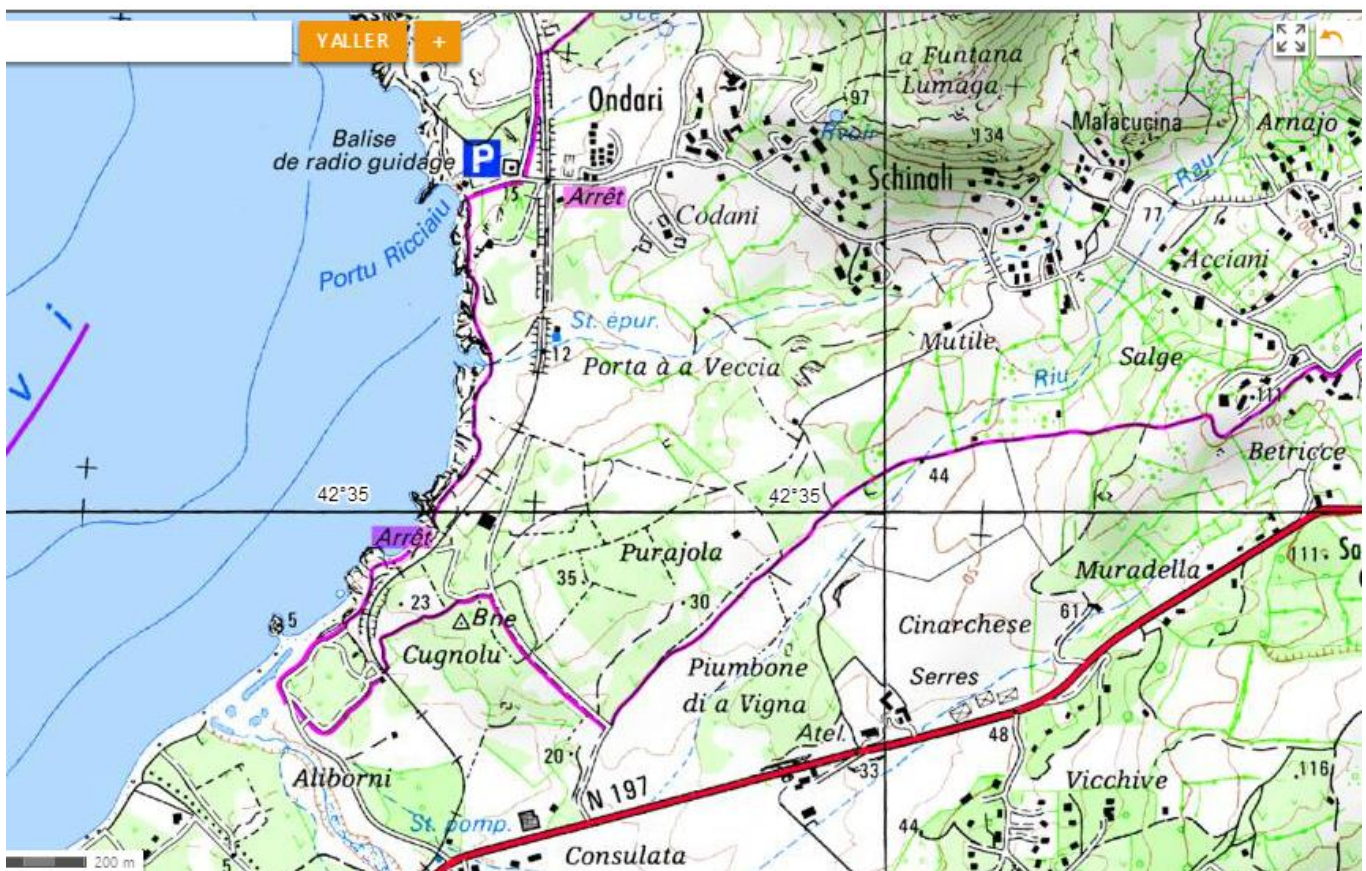


43 - Tour de Caldanu – 42°34'58"N 8°47'59"E (le 20/10)

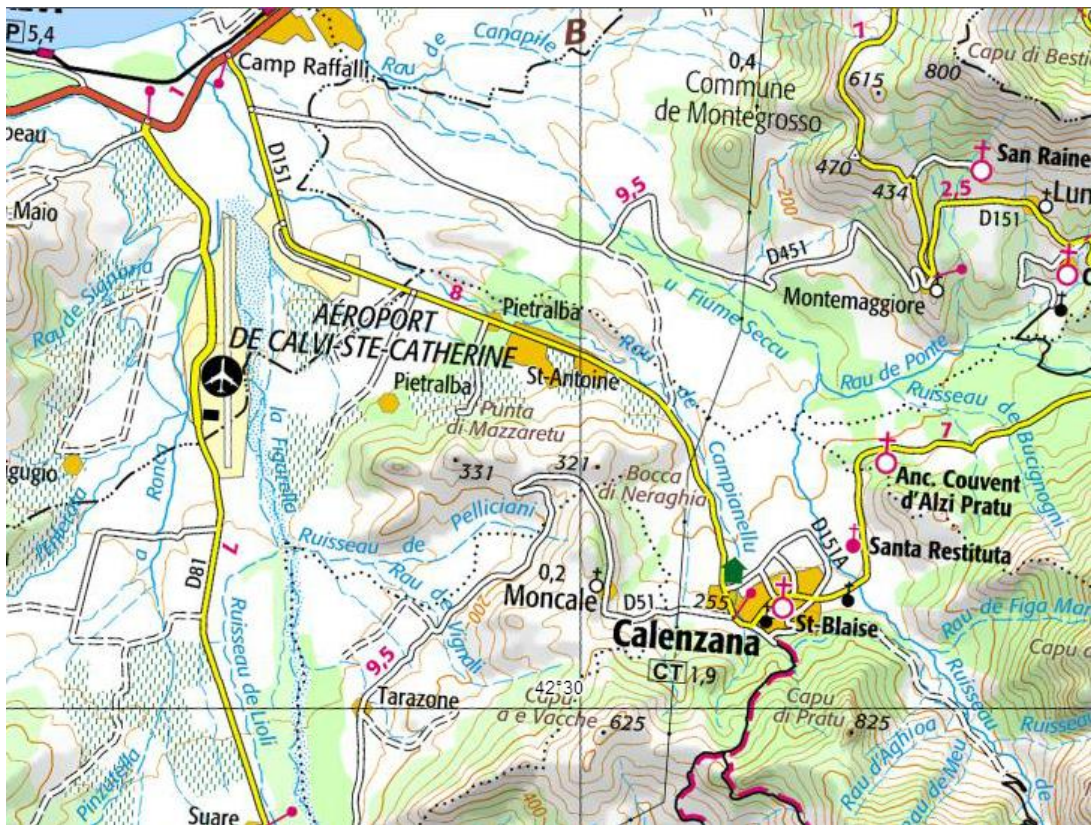




42°35o (Le 20/10)

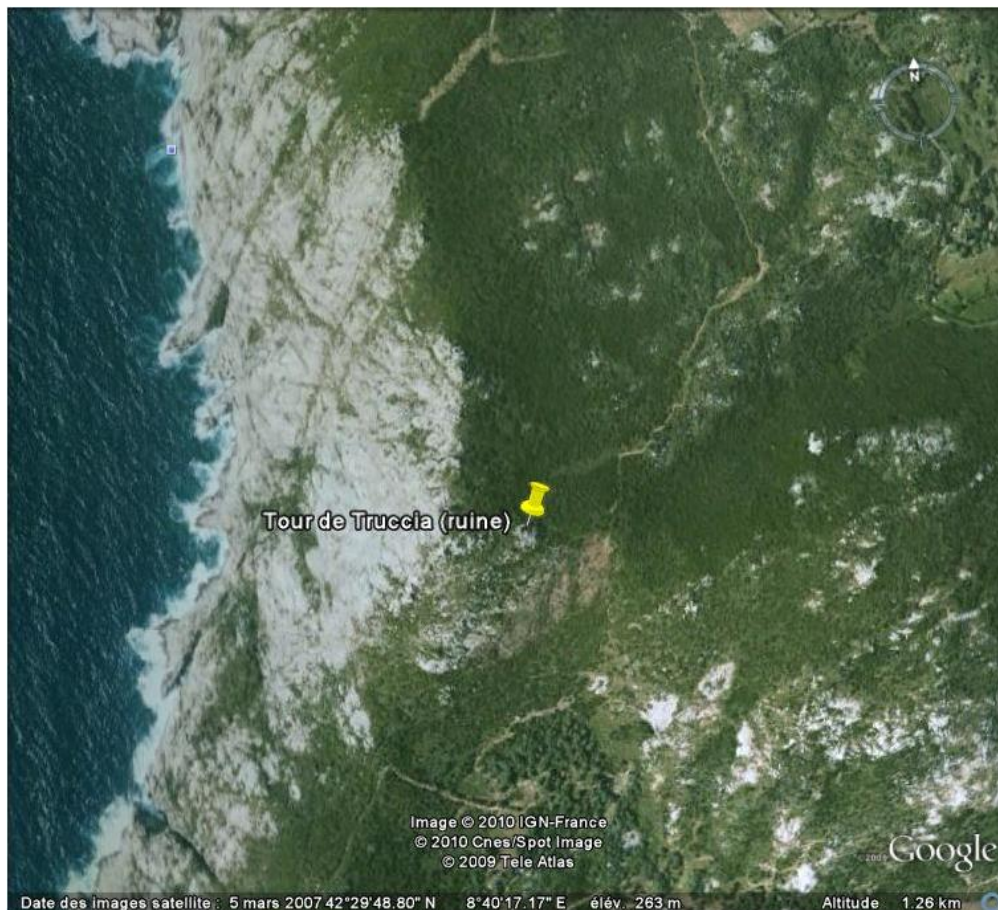


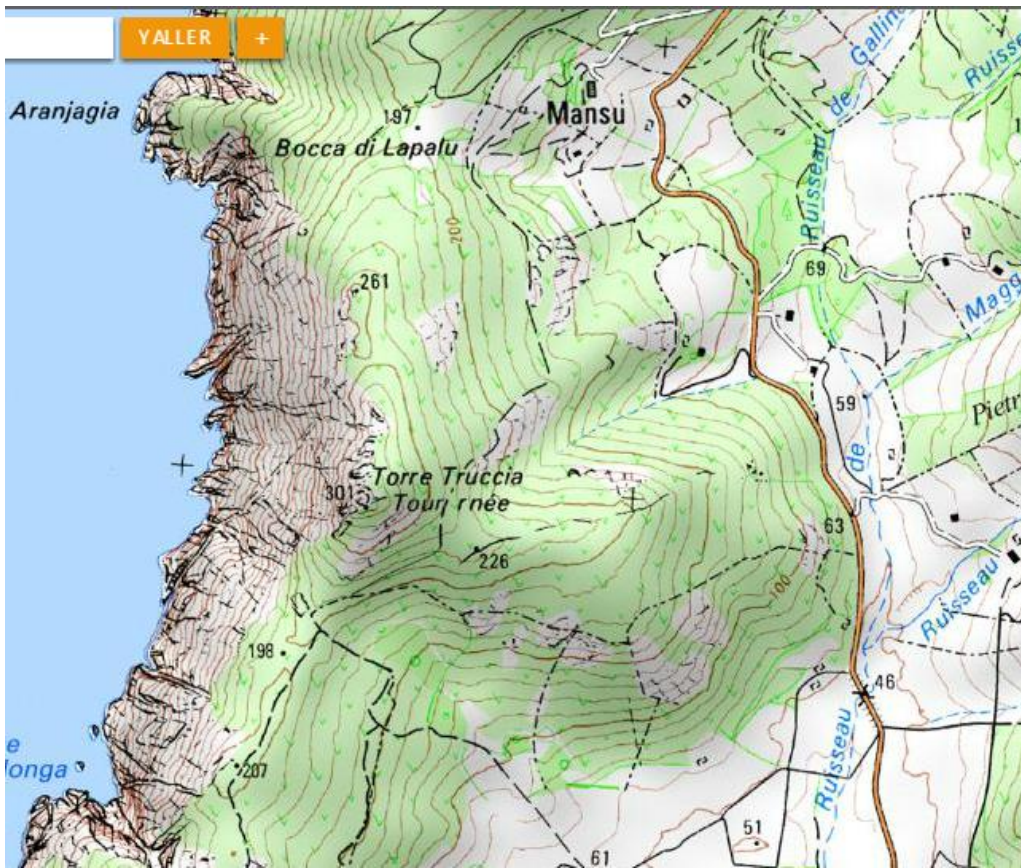
42°40' (le 20/10)



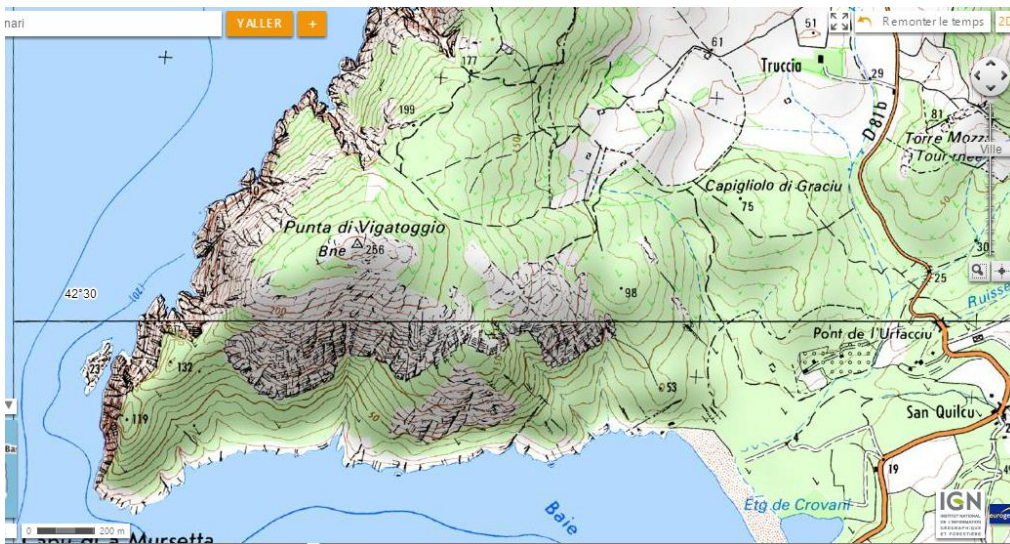
L 20 – Calvi - Casa di Floumy

44 - Tour de Truccia – 42°29'46"N 8°40'18"E (le 21/10)





42°30o (le 21/10)



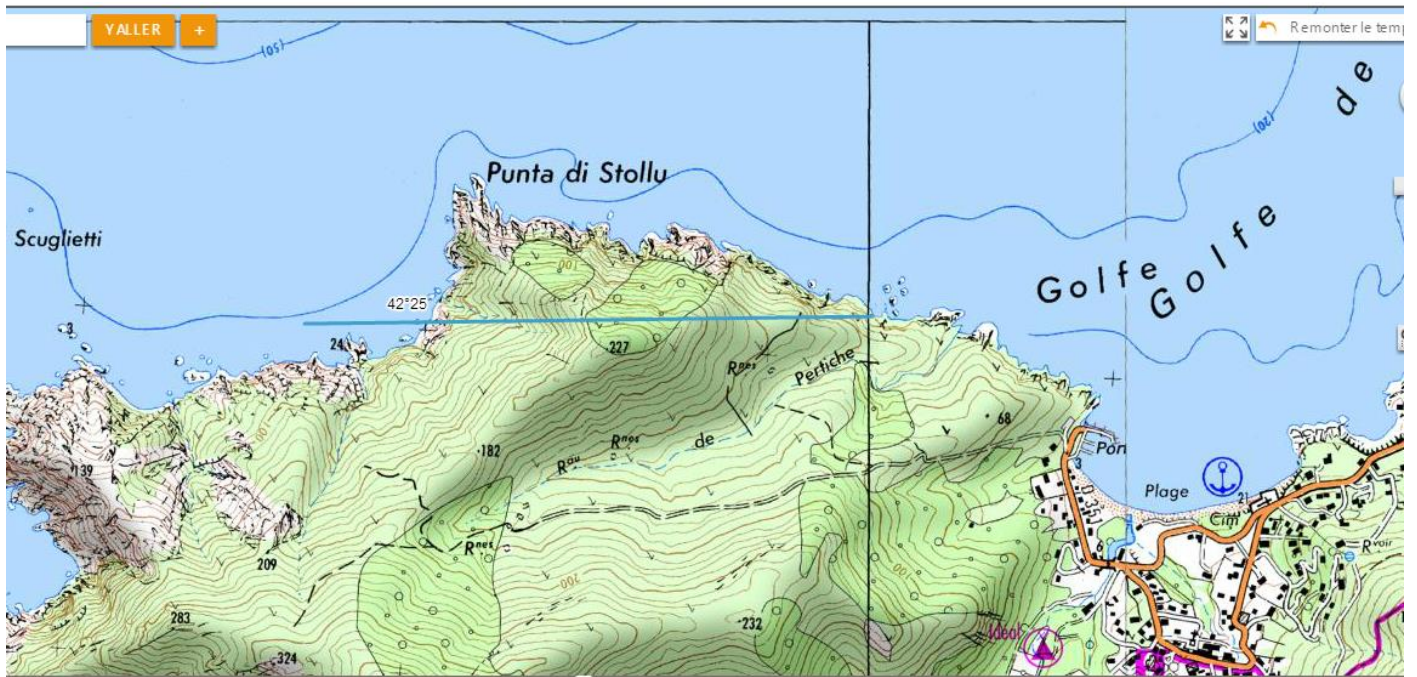
45 - Tour de Maraghju ??? (pas intéressant dans les terres)

46 - Tour de Galeria – 42°25'07.50"N 8°39'26.70"E (le 21/10)



M 21 – Galeria – Camparellu

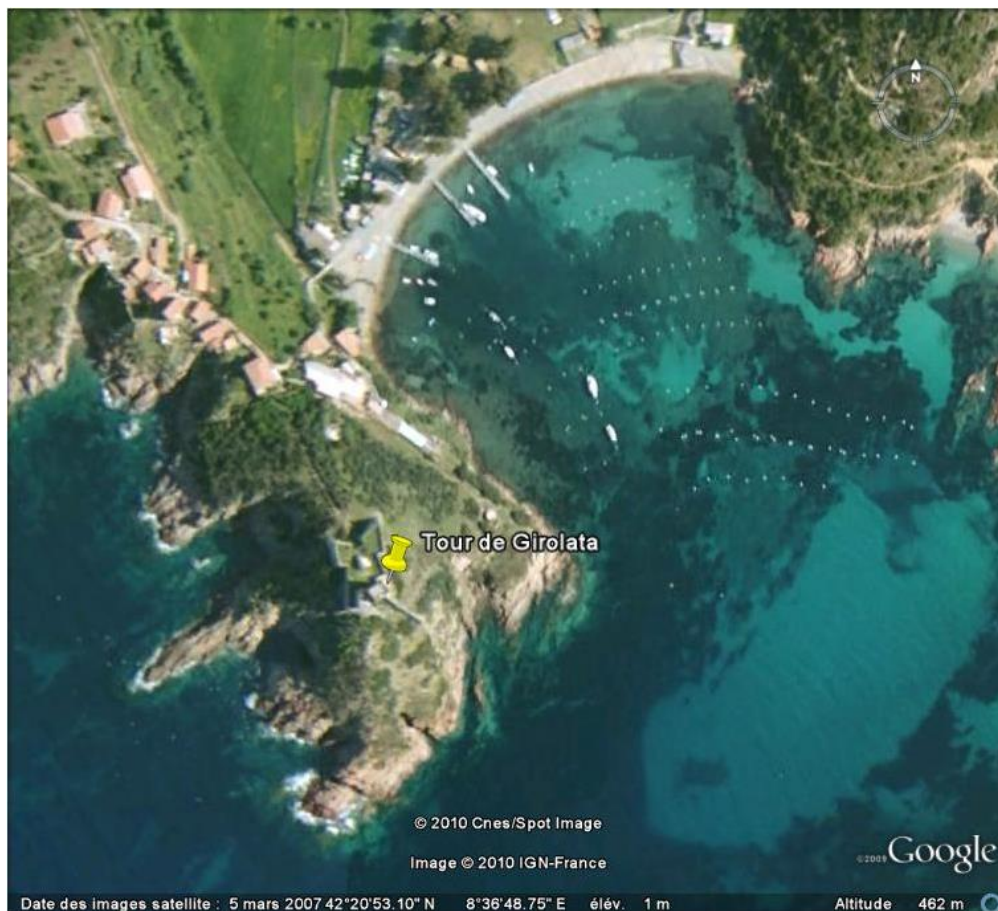
42°25o (le 22/10)



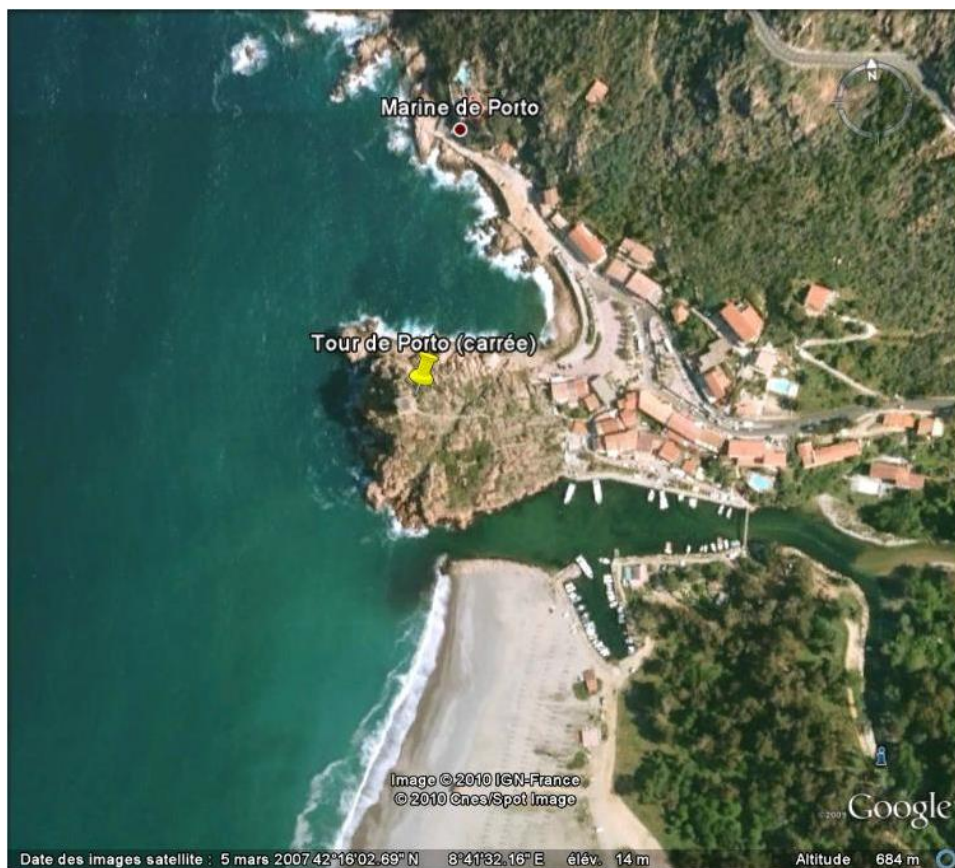
47 - Tour d'Elbo – 42°22'18"N 8°34'24.50"E (inaccessible par terre)

48 - Tour de Gargali – 42°22'14"N 8°32'20.50"E (inaccessible par terre)

49 - Tour de Girolata – 42°20'51"N 8°36'46"E (le 22/10)



50 - Tour de Porto – 42°16'04"N 8°41'29.50"E

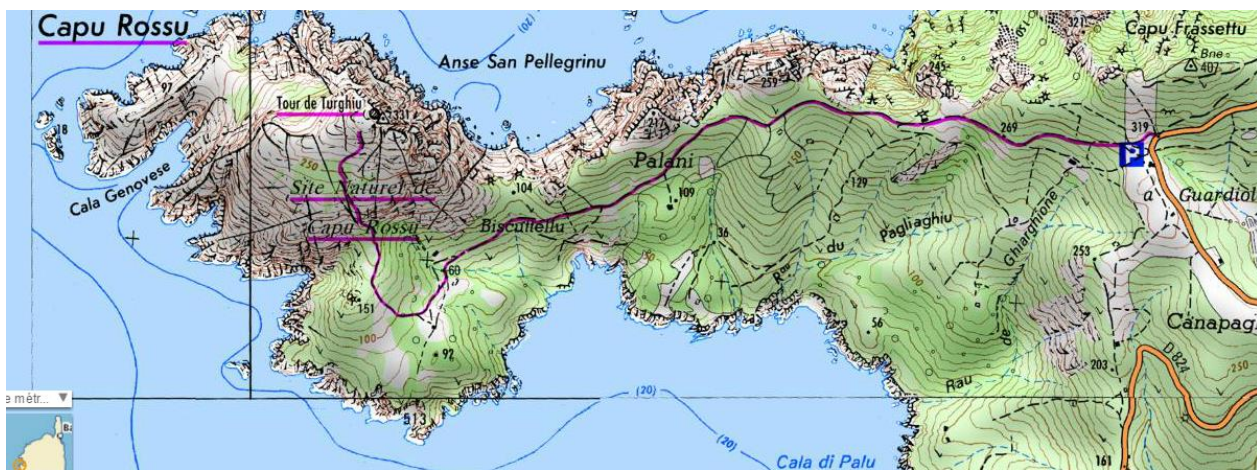
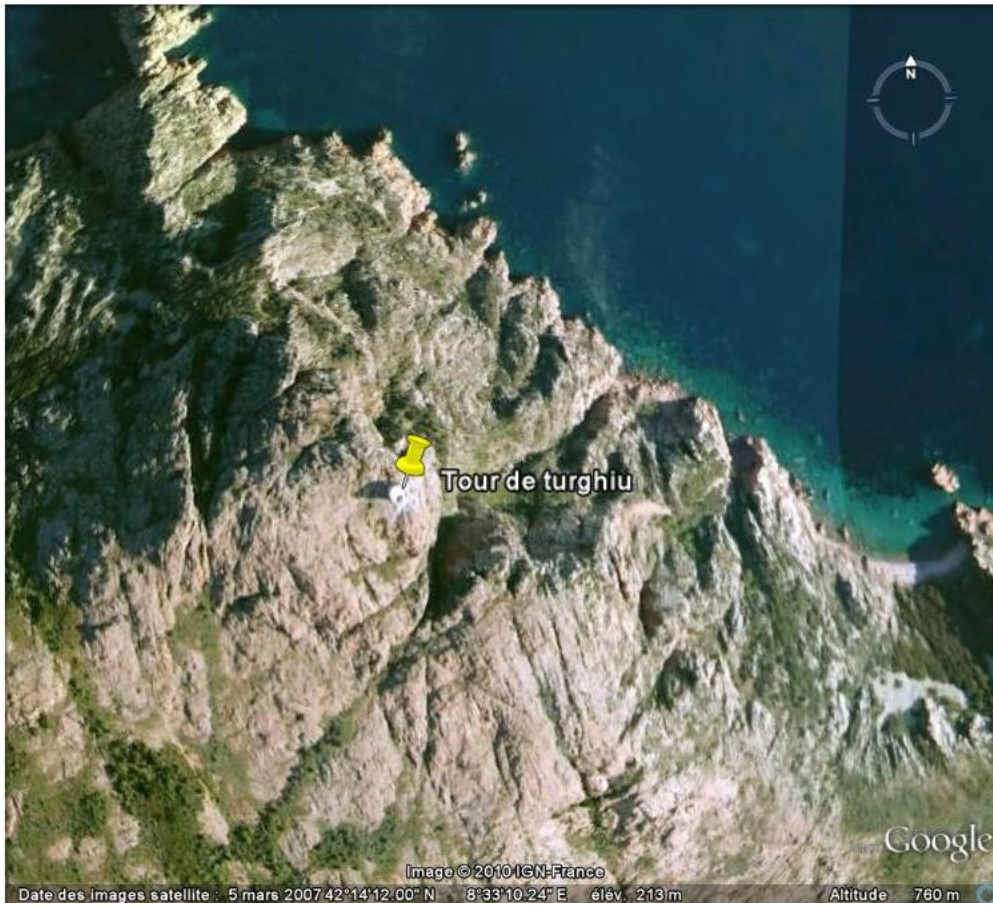


M 22 – Porto - Le Vaita

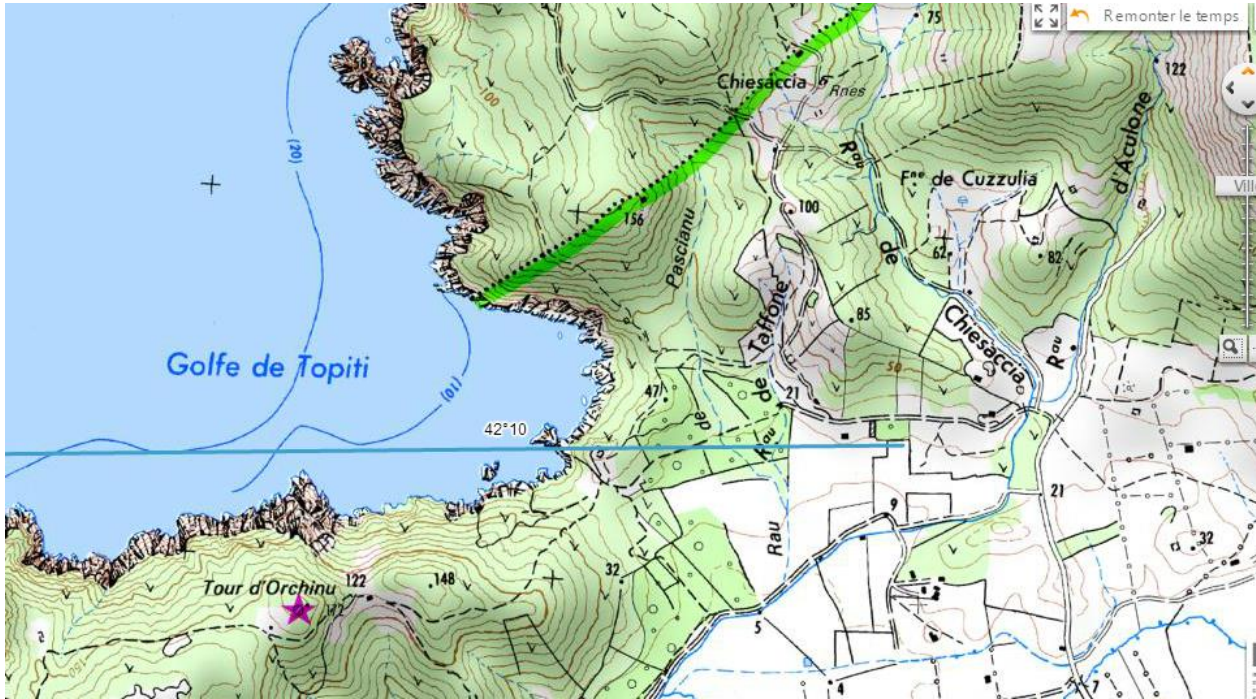
42°15 (le 23/10)



51 - Tour de Turghiu – 42°14'11.50"N 8°03'07.50"E (le 23/10)

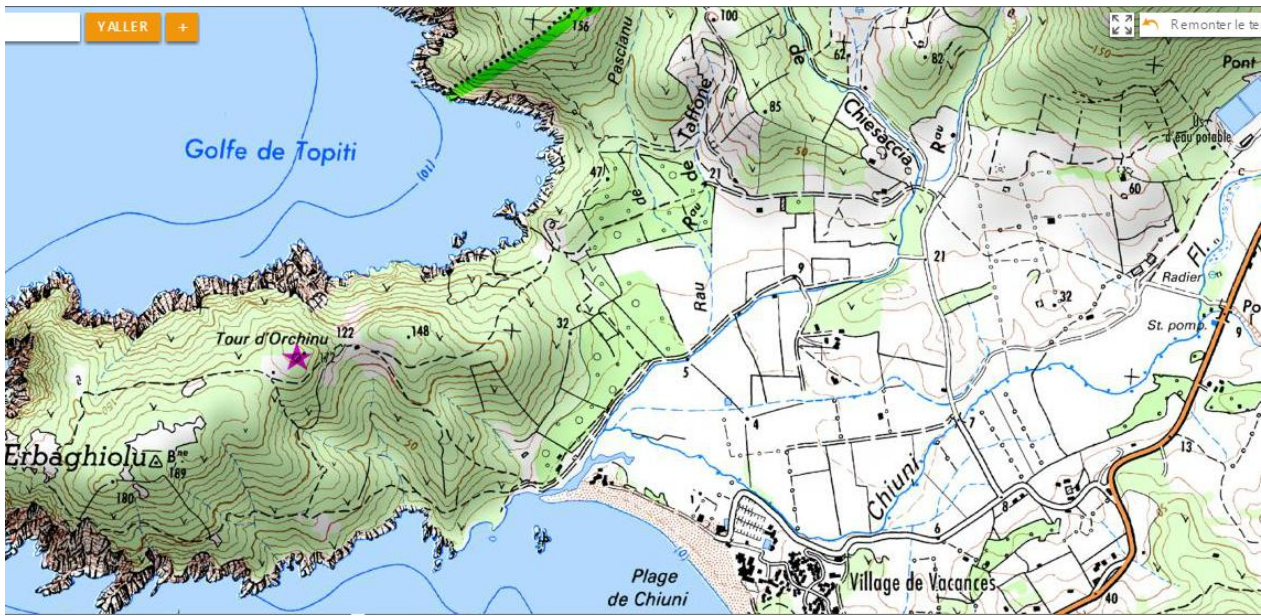


42°10o (le 23/10)

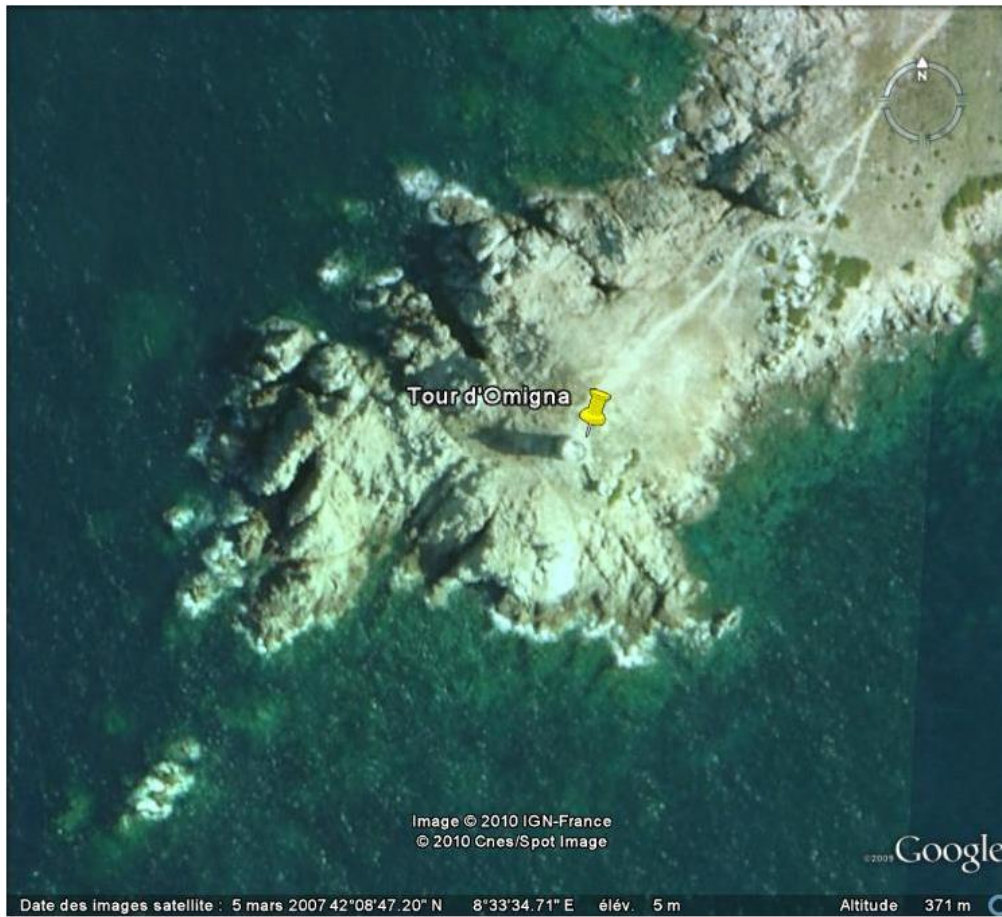


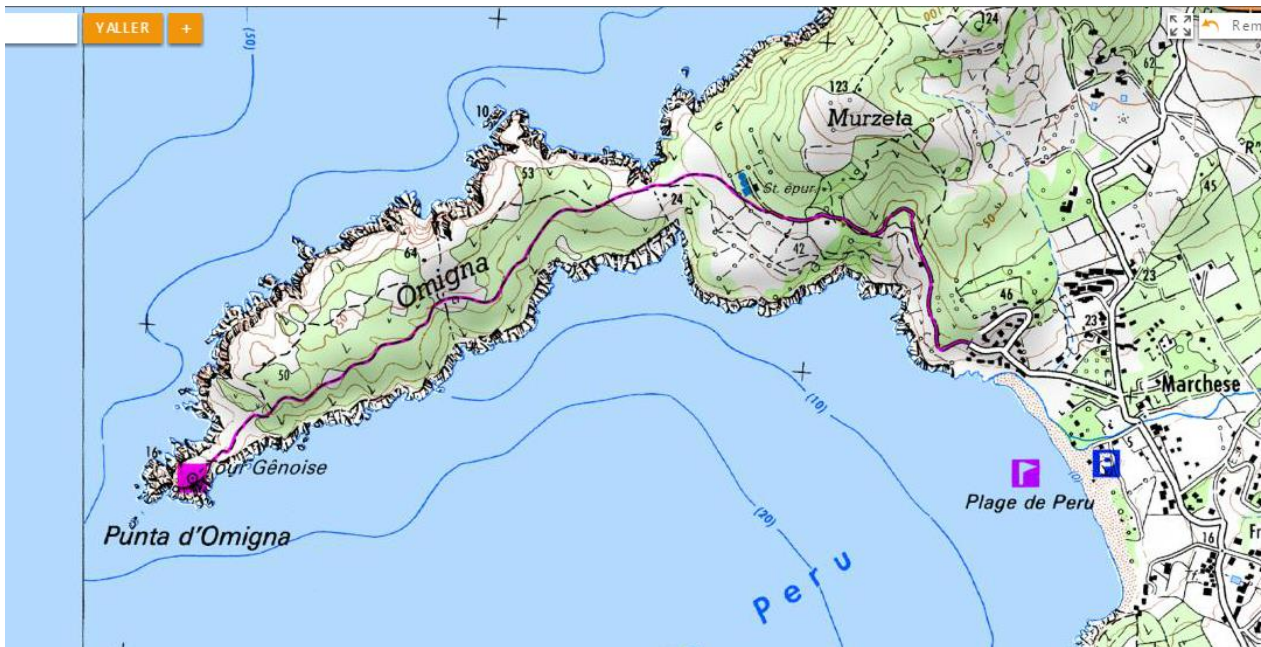
52 - Tour d'Orchinu – 42°10'32"N 8°34'36"E (Le 23/10)





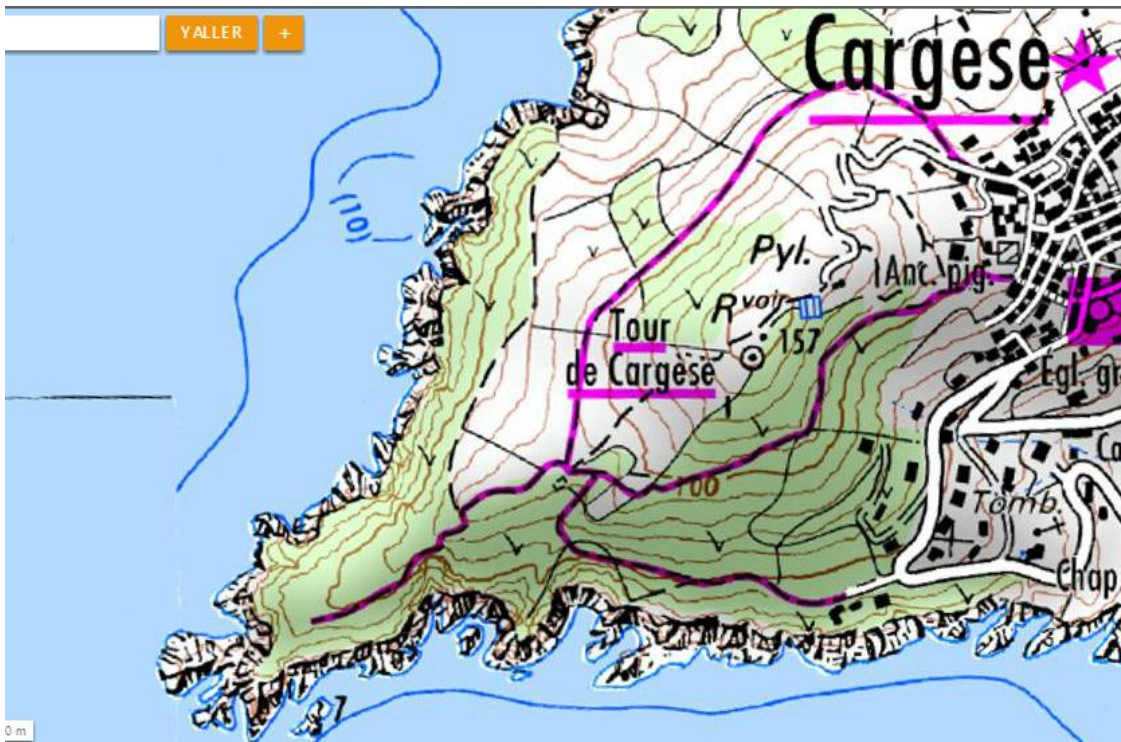
53 - Tour d'Omigna – 42°08'47.50"N 8°33'36"E (le 23/10)





54 - Tour de Cargèse – $42^{\circ}07'58.50''\text{N}$ $8^{\circ}35'22''\text{E}$ (le 23/10)



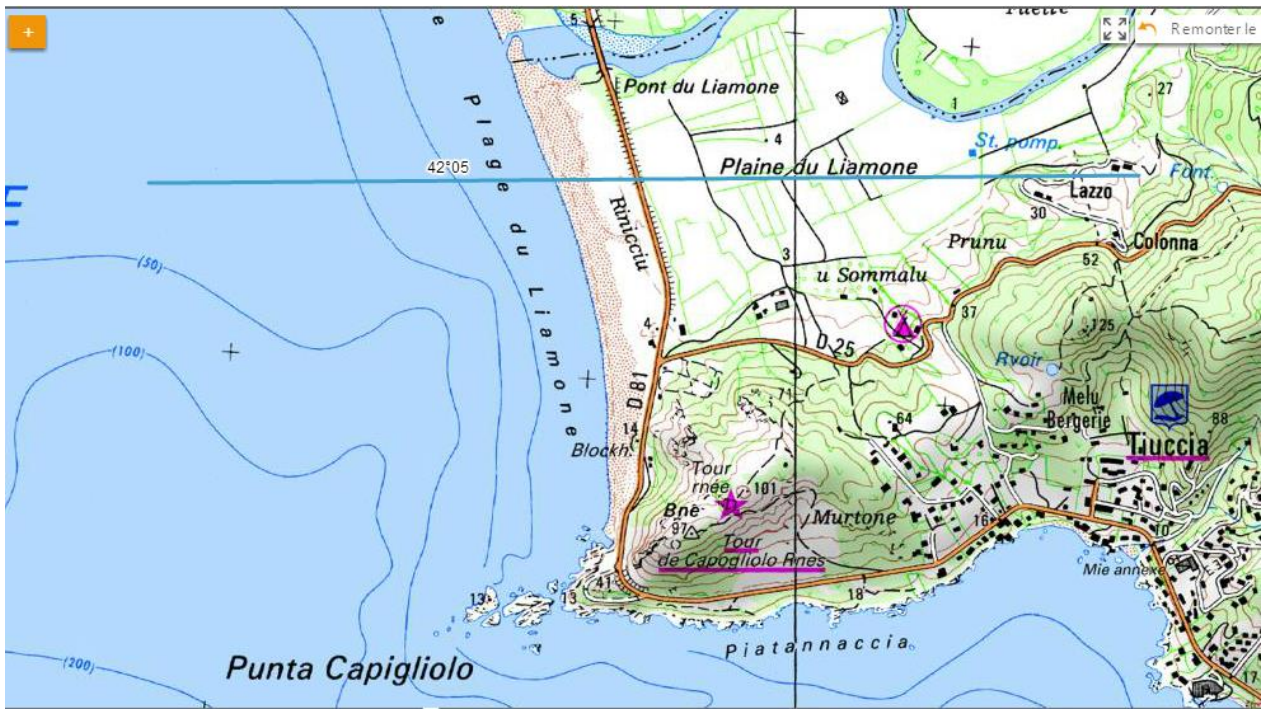


J 23 – Cargèse - Le St Jean

55 - Tour de Sagone – 42°06'38"N 8°41'11.50"E (le 24/10)



42°05 (le 24/10)

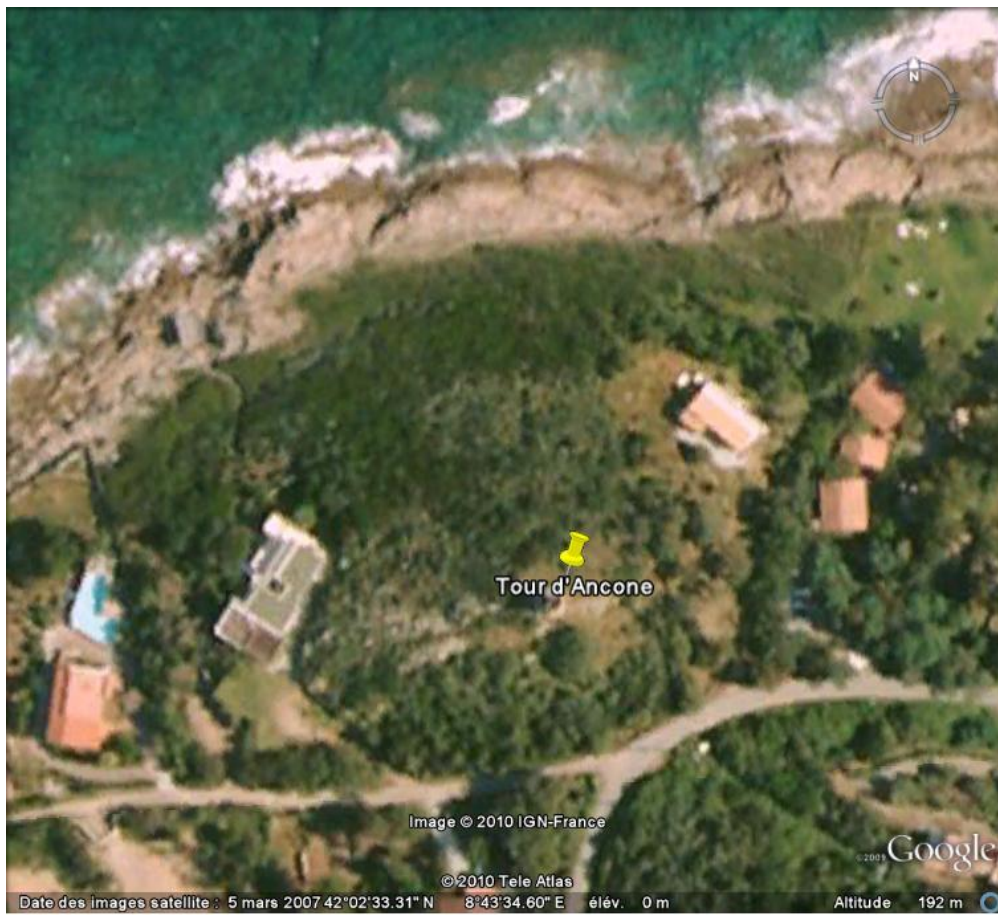


56 - Tour de Capigliolo – 42°03'55.50"N 8°43'22.40"E (le 24/10)

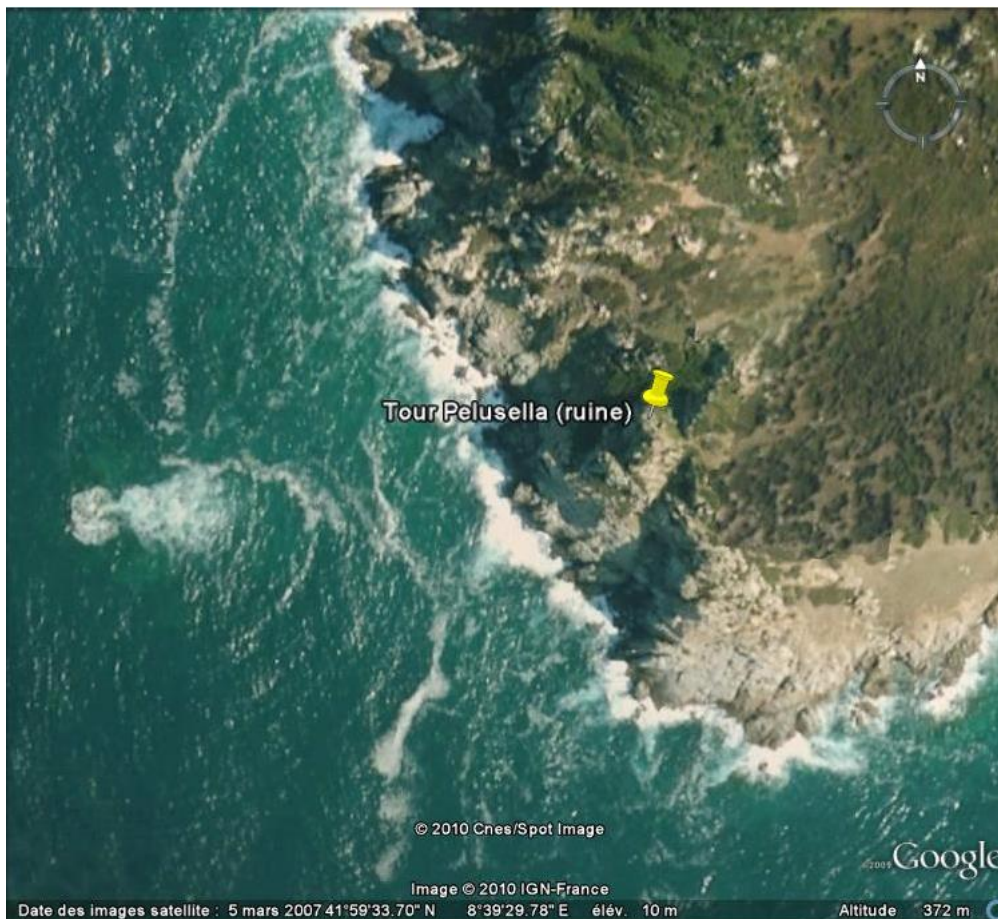


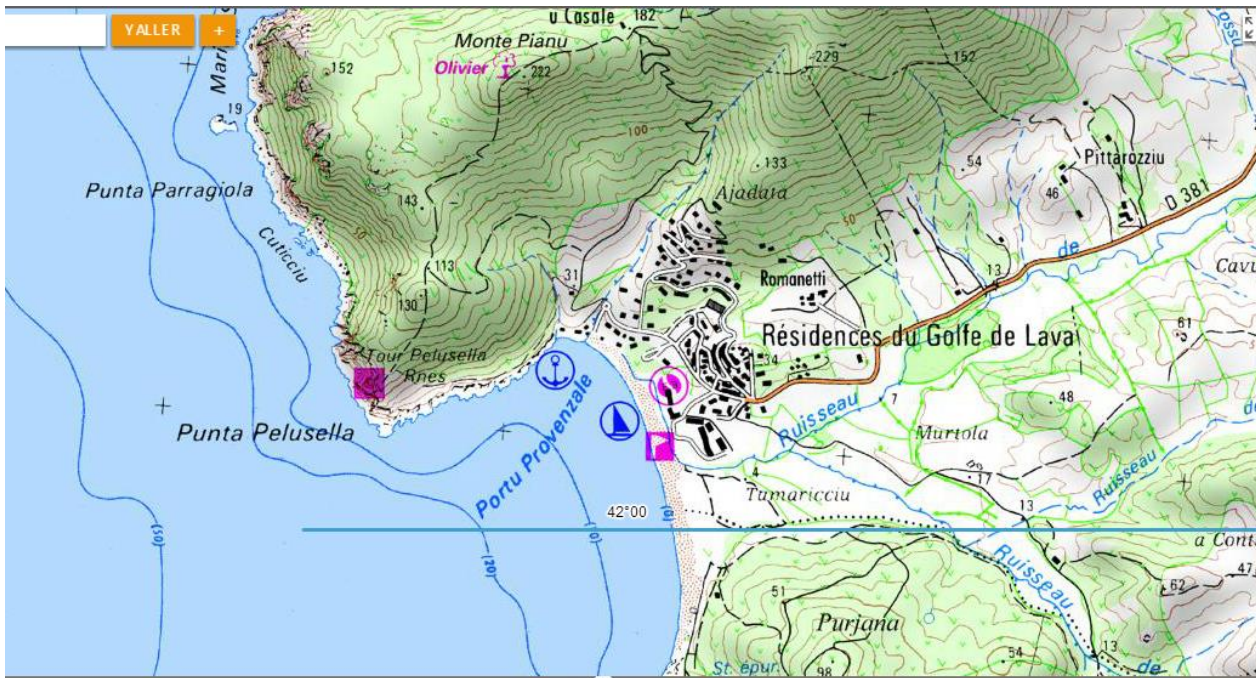
Voir plan d'accès ci-dessus

57 - Tour d'Ancone – 42°02'32"N 8°43'35"E (le 24/10)



58 - Tour de Pelusella – 41°59'34"N 8°39'32"E (le 24/10)





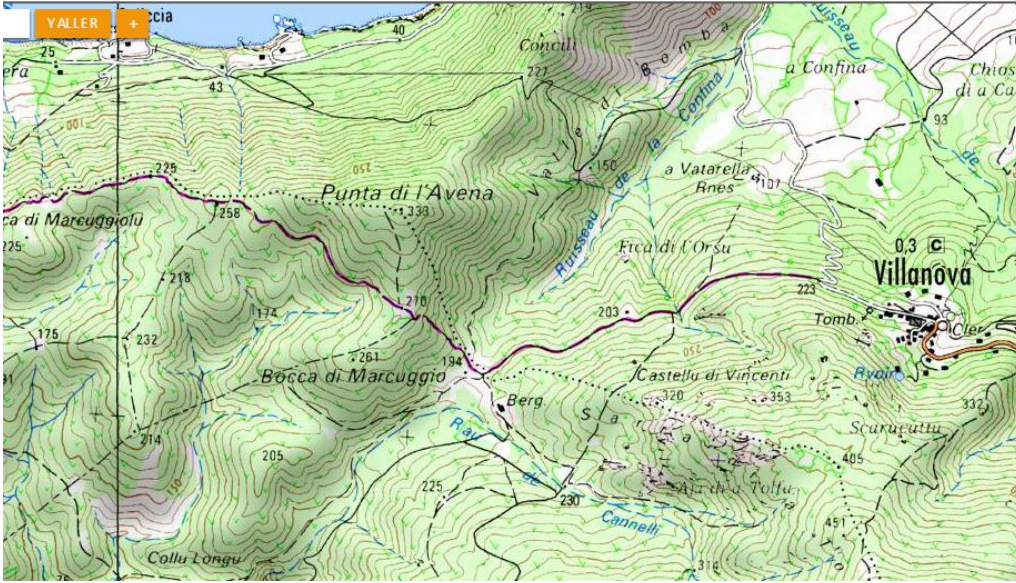
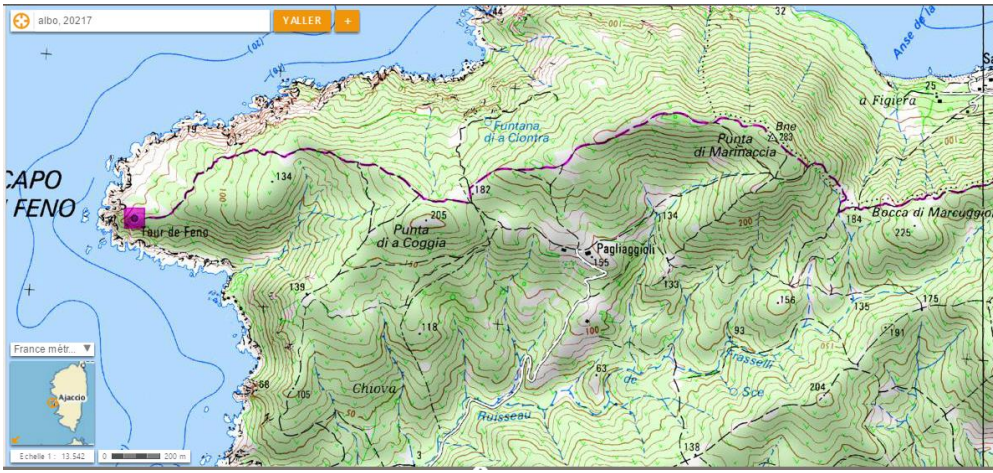
42°00 (le 24/10)

Voir plan d'accès ci-dessus

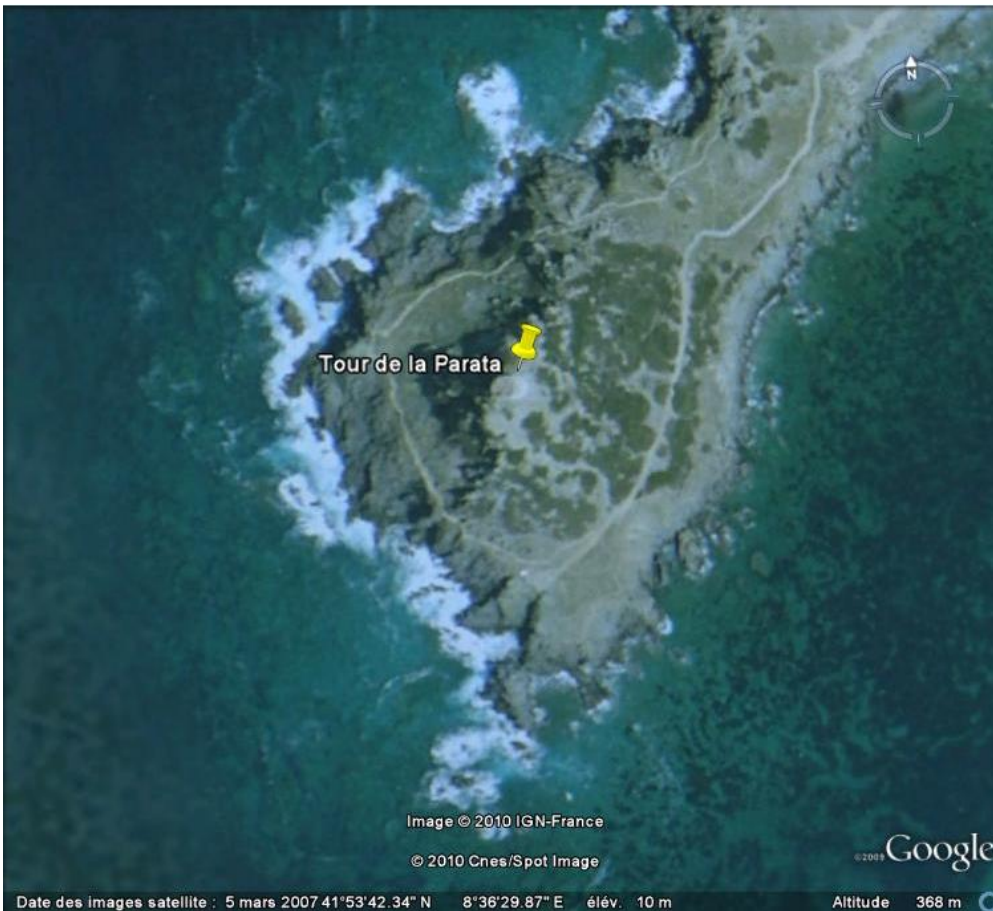
V 24 – Ajaccio - Ibis

59 - Tour de Feno – 41°57'44"N 8°35'36"E (le 25/10 – à partir d'Ajaccio)



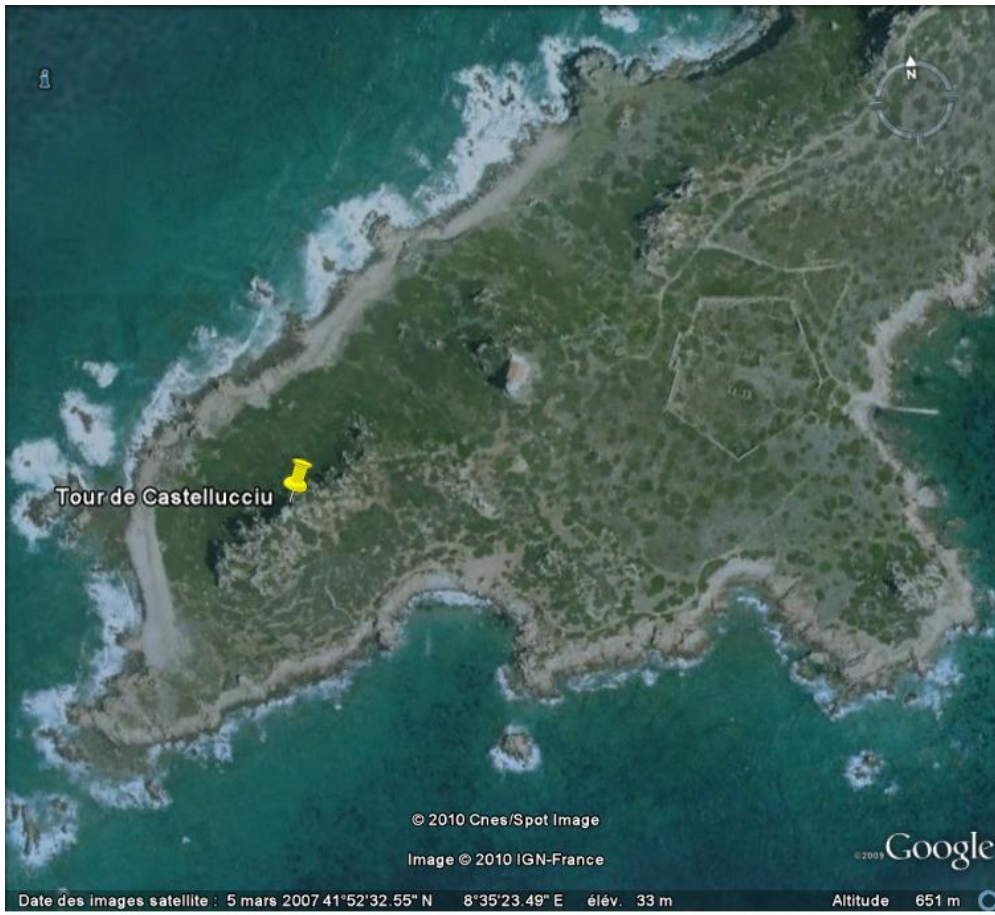


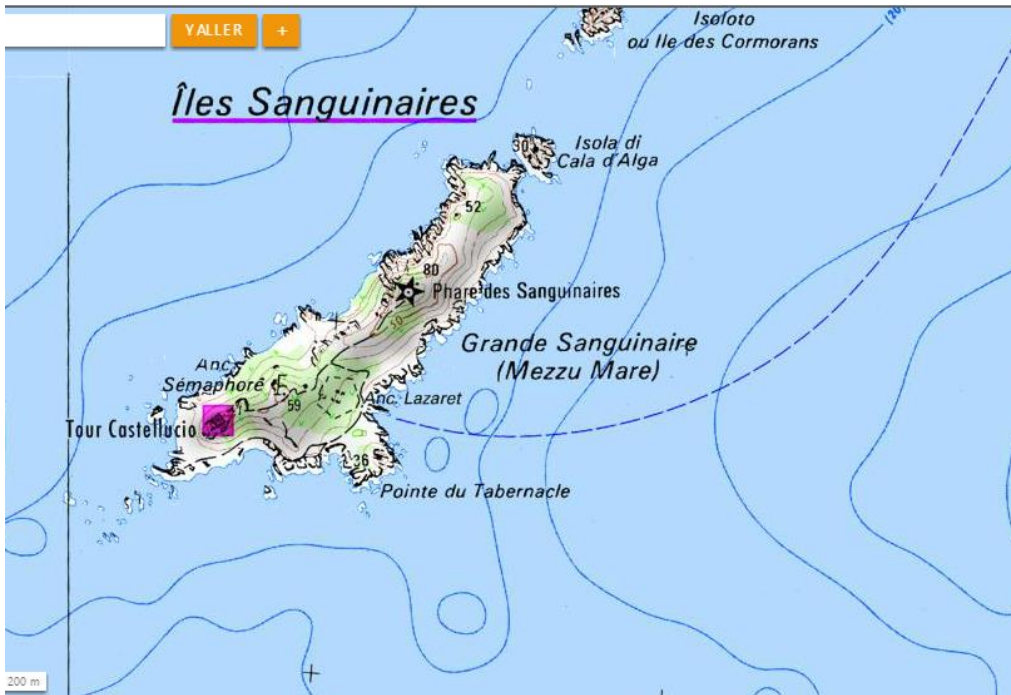
60 - Tour de la Parata – $41^{\circ}53'43.20''\text{N}$ $8^{\circ}36'30.60''\text{E}$ (le 25/10 – à partir d'Ajaccio)





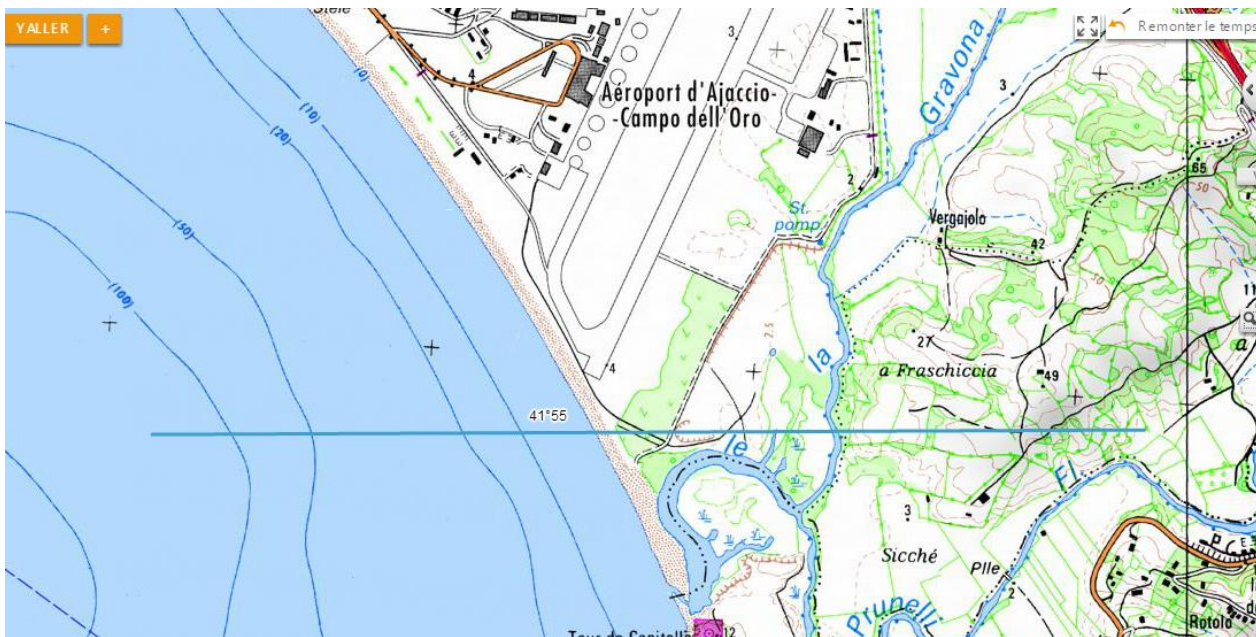
61 - Tour de Castellucciu – 41°52'32"N 8°35'16.50"E (le 25/10 – à partir d'ajaccio)





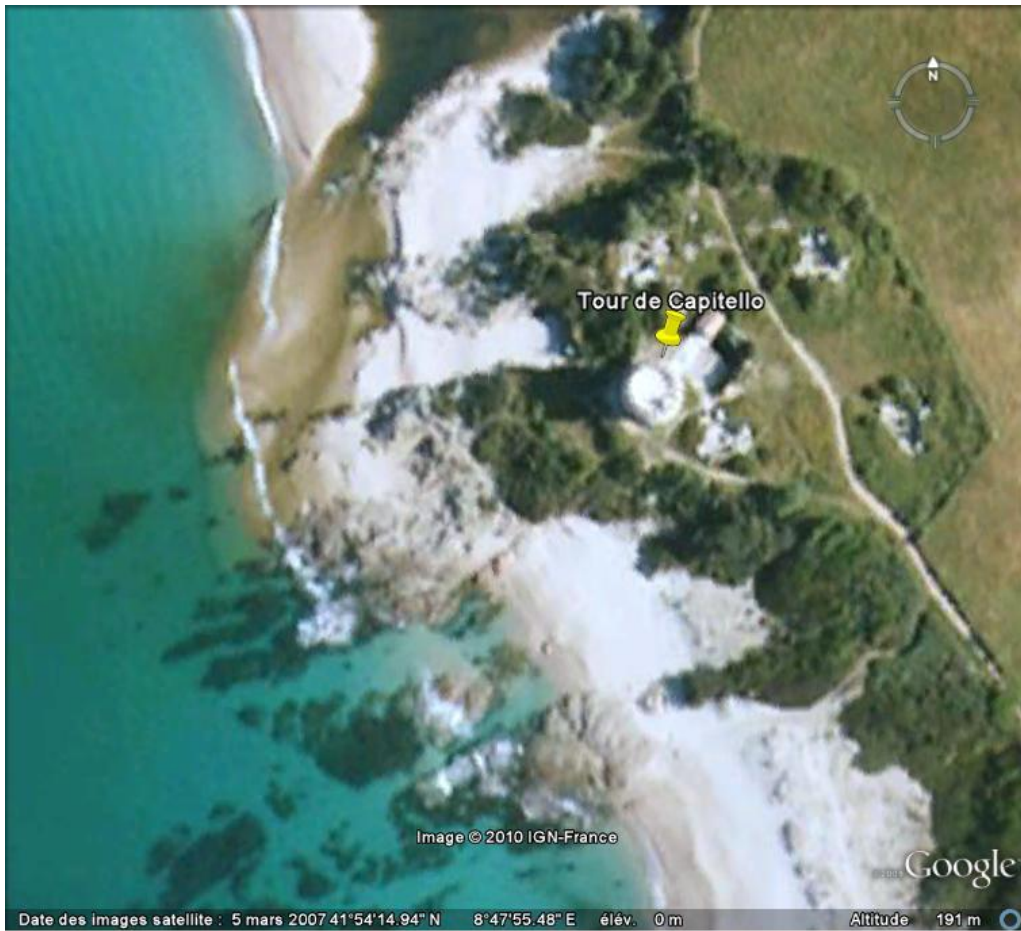
Solution à trouver sur place pour y accéder

41°55 (à partir d'ajaccio)



62 - Tour d'Aspetto – **Disparue**

63 - Tour de Capitello – 41°54'15.50"N 8°47'57"E (le 25/10 – depuis Ajaccio)



S 25 – Ajaccio - Ibis